

MONTHLY MEMBERSHIP PROGRESS REPORT

District 11 A1

Results as of: 3/31/2026

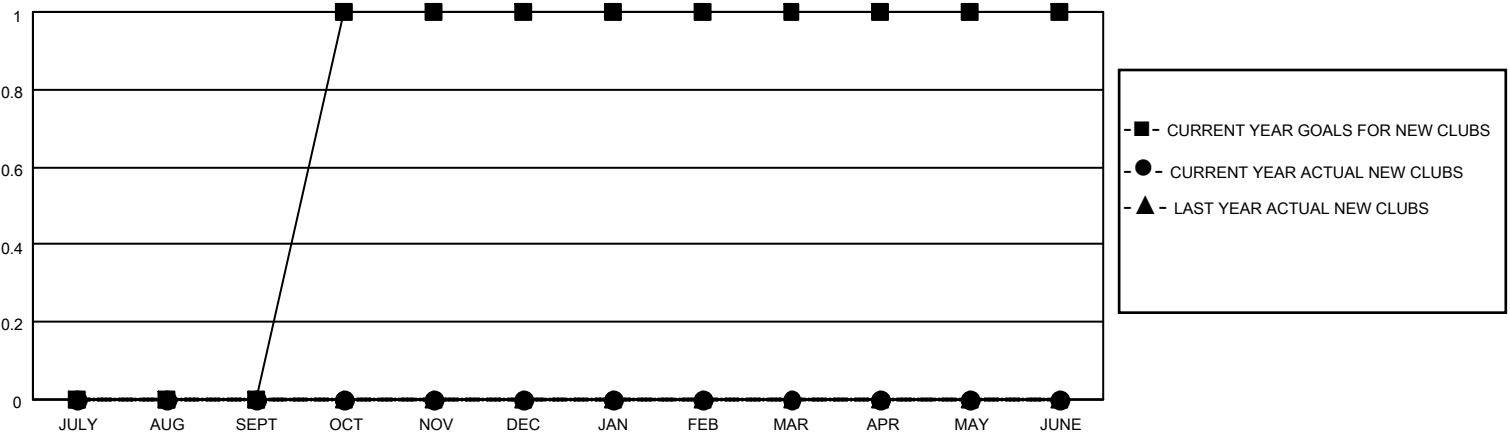
GMT:

LOCATION MICHIGAN

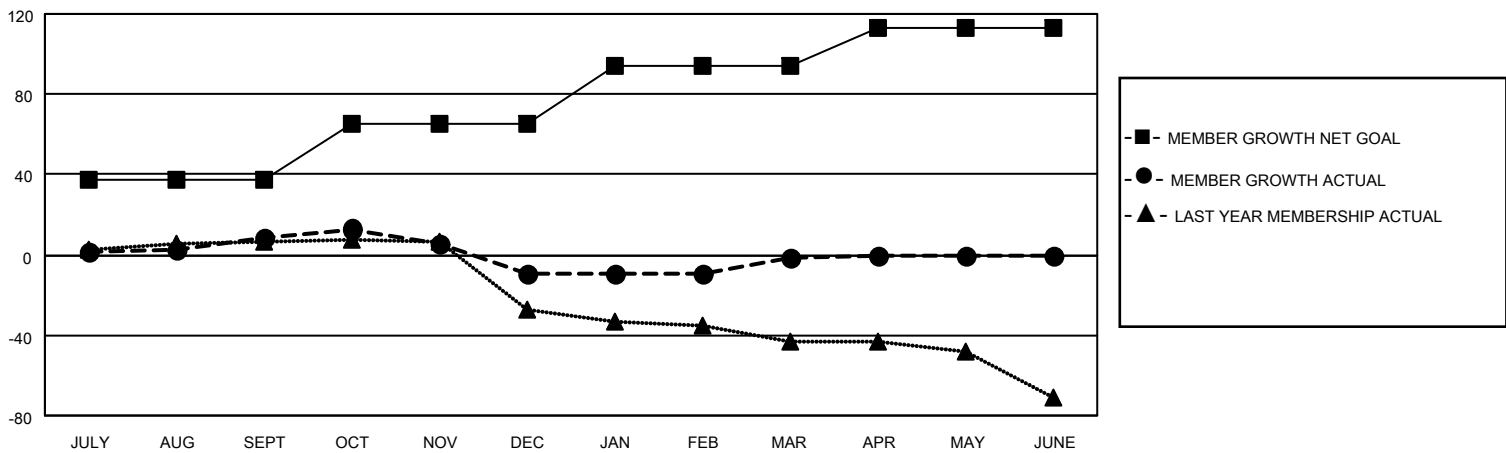
GMT CA

Clubs				Members			
RESULTS FOR 2025-2026				RESULTS FOR 2025-2026			
QUARTER	NEW CLUB GOAL	NEW CLUBS	DROPPED CLUBS	QUARTER	MEMBER GROWTH NET GOAL	MEMBER GROWTH ACTUAL	DROPPED MEMBERS ACTUAL (including transfers)
JULY/AUG/SEPT	0	0	0	JULY/AUG/SEPT	37	13	3
OCT/NOV/DEC	1	0	2	OCT/NOV/DEC	28	27	39
JAN/FEB/MAR	0	0	0	JAN/FEB/MAR	29	26	14
APR/MAY/JUNE	0	0	0	APR/MAY/JUNE	19	0	0

GOALS AND ACTUAL NEW CLUBS CUMULATIVE



GOALS AND ACTUAL MEMBERS CUMULATIVE



DROPPED CLUBS: 2	13 CLUBS OF 30 ADDED 1 OR MORE NEW MEMBERS	GENDER DISTRIBUTION
		MALE 356 (57.05%)
		FEMALE 267 (42.79%)
DROPPED MEMBERS	CLICK HERE FOR CUMULATIVE MEMBERSHIP DATA	TOTAL FAMILY UNIT MEMBERS 128
DECEASED 16		FAMILY MEMBERS PAYING HALF DUES 67
CLUB CANCELLED 11		
OTHER 29		
TOTAL 56		